

Answer Key

YEAR : 2021

LEVEL : PRIMARY 5

SCHOOL : ROSYTH SCHOOL

SUBJECT : SCIENCE

TERM : SA2

BOOKLET A

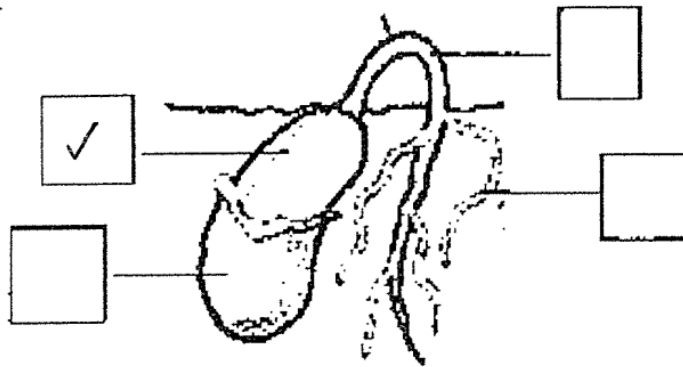
Q1	4	Q2	4	Q3	3	Q4	3	Q5	2
Q6	3	Q7	1	Q8	3	Q9	3	Q10	3
Q11	2	Q12	2	Q13	4	Q14	4	Q15	2
Q16	4	Q17	3	Q18	4	Q19	2	Q20	2
Q21	3	Q22	2	Q23	3	Q24	4	Q25	3
Q26	1	Q27	2	Q28	4				

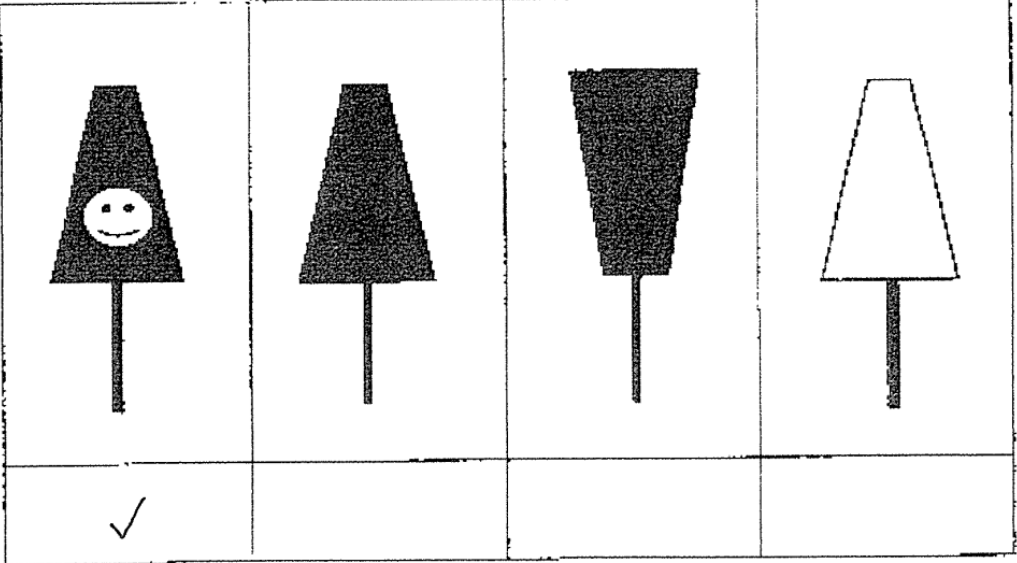
BOOKLET B

Q29	(a) Yes, grasshopper have three legs and three body parts just like animal D. (b) Both C and F have legs (c) F (d) Yes, birds have two legs and they do not have hair as an outer body covering.
Q30	(a) Respiratory and circulatory (b) When the heart pumps faster, the breathing rate is faster. (c) When jogging, the heart pumps blood rich in oxygen and digested food faster to the rest of the body to produce more energy.
Q31	(a) Fertilisation (b) The nucleus of the sperm fuse with the nucleus of the egg. (c) Testis
Q32	(a) The cell in set-up D will swelled and turn red. (b) The cell membrane, it controls what enter and exit.
Q33	(a) Yes. The stigma is still present to receive the pollen grains from other flower. (b) Ovules (c) The other is hanging out. Hence, the wind can help to transfer the pollen grains to the stigma.
Q34	(a) As the temperature increases from 5°C to 20°C, the number of days for the roots to appear decrease. As the temperature increases from 20°C to 30°C, the number of days for the roots to appear increase.

(b) Hold the plant firmly to the ground

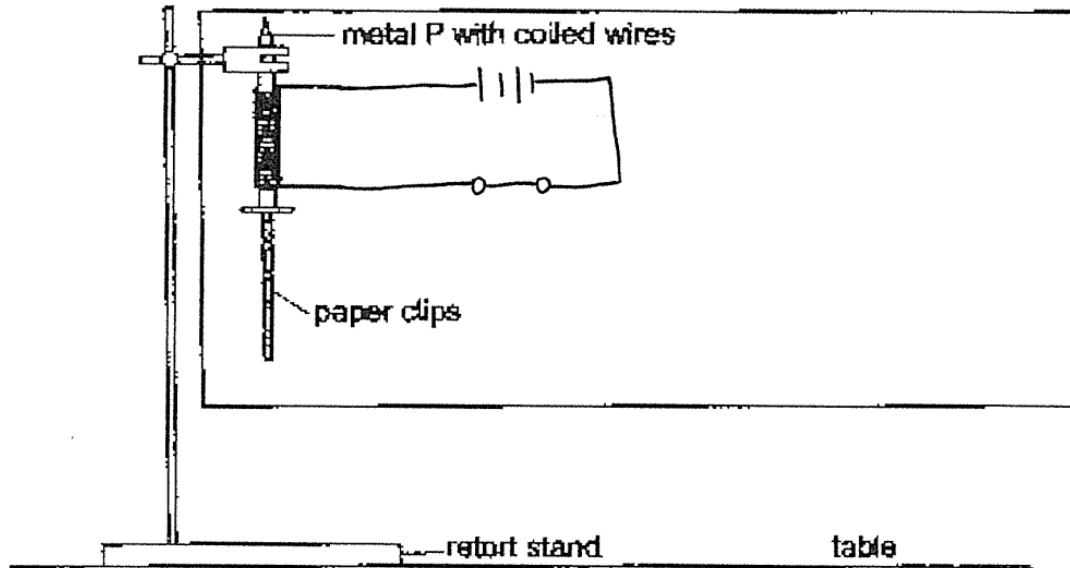
(c)



Q35	<p>(a) There is no light for the puppet to reflect to reflect light into Ellie's eye</p> <p>(b)</p>
	
<p>(c) 70cm</p> <p>(d) The further the distance of the puppet from the screen, the longer the height of shadow on the screen</p>	
Q36	<p>(a) Condensation and evaporation</p> <p>(b) To provide heat for water to evaporate</p> <p>(c) Get clean water</p>
Q37	<p>(a) To find if the presence of wind will affect the rate of evaporation</p> <p>(b) Set-up A. The presence of wind increase the rate of evaporation hence water in set-up A has a lower water level</p> <p>(c) Open the window, the towel will gain heat from the sun and the water in the towel will evaporate</p>
Q38	<p>(a) liquid → gas</p> <p>(b) Water gains heat to boil and become hot water vapour. Hot water vapour touches the cooler glass surface and lose heat to condense into water vapour</p>
Q39	<p>(a) Batteries, it gives the circuit electrical current</p>

(b) No. Plastic is an electrical insulator. When the plastic ring touches the metal structure, the circuit will remain open and the the buzzer will not sound

Q40 (a)



(b) Both electromagnet attracted the same number of paper clip
(c) Q. When the circuit is open, metal P loses its magnetism faster than Q.
So the magnetic object will drop of the collection bin faster